

ATS1211

8-ZONE INPUT EXP IN METAL HSG

Data Gathering Panels

Data Gathering Panels (DGP) are used to expand the number of alarm inputs on the system and allow inputs and relays to be connected at a location remote from the Advisor MASTER panel. DGPs communicate via poll & reply messages and send alarms to the control panel for processing. The DGPs collect information from detectors, door contacts and other similar devices. There are DGPs available for conventional devices, wireless devices as well as for intelligent addressable devices. A special DGP is also available for collecting the information for either four doors or lifts.

System databus connection

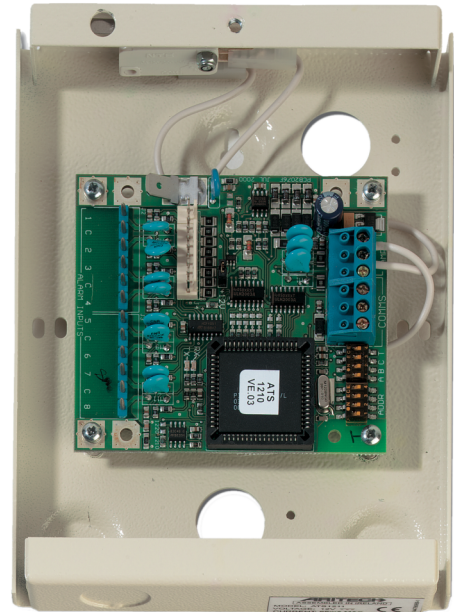
The system databus is used to connect Data Gathering Panels (to provide extra zones) and Arming Stations to the ATS control panel. Remote devices can be up to 1.5 km from an ATS control panels. Arming stations and Data Gathering Panels must be connected via a 2 pair twisted shielded data cable from the system databus connection. (WCAT 52 is recommended). The shield of the data cable should be connected to earth at the ATS control panel and should be left disconnected at any other end.

Functionality

Should a failure in communications occur, the Data Gathering Panel remembers the last alarm in a system, helping to identify possible reasons for faults. Up to 15 DGP's can be connected directly to the Advisor Master panel. For every DGP expanded to more than 16 inputs, the total number of Data Gathering Panels in a system reduces by one. If a system has all its Data Gathering Panels fully expanded to 32 inputs, the physical number of Data Gathering Panels in a system becomes 8.

Product Overview

8-zone DGP with Output Connector (ATS1643 steel housing included). Depending on the basic capacity of the control panel up to 15 input expanders can be used at a maximum distance of 1,5km. The product has included the ATS1643 housing.



Details

- 8 inputs on board
- 8 OC outputs on board
- Steel enclosure with opening tamper sensors

ATS1211

8-ZONE INPUT EXP IN METAL HSG

Technical specifications

General

Expander type	Input expander
Product line	Advisor Advanced, ATS Master
Connection type	Databus connection
Max. distance from panel	1.5 km
Max. per panel	15
Specified cable	WCAT 52/54 or equivalent

Inputs

Total	8
Onboard	8

Outputs

Onboard	8 (OC)
Type of outputs	Open Collector
Maximum number of outputs	16

System

Addressing	DIP Switches
------------	--------------

Electrical

Operating voltage	10.5 to 13.8 V
Power supply type	VDC
Power supply value	10.5 to 13.8 VDC (powered by the panel bus)
Current consumption	53 mA
Integrated power supply	No

Physical

Physical dimensions	166 x 126 x 37 mm
---------------------	-------------------

Environmental

Operating temperature	-10 to 55°C
-----------------------	-------------