

# ATS1742

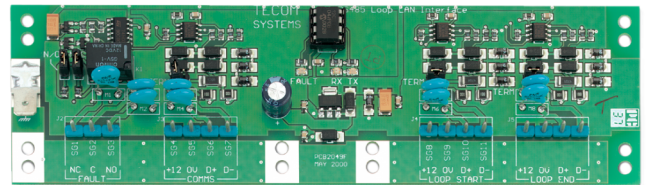
## RS485 databus closed loop interface

### Product Overview

The ATS RS485 closed loop module allows the RS485 data bus to start from one point and end at the same point. If a breakage occurs in the loop at any point, communication continues in the opposite direction, therefore ensuring a continuous operation. Breakages in the loop also trigger a fault relay, and the Advisor MASTER is able to determine the location of the breakage and generate an alarm.

### Mounting

The board has a standard Aritech 'B' size footprint, mountable in existing Interlogix housings. Recommended cable is WCAT 52/54; 2-pair twisted, shielded, data cable.



# ATS1742

## RS485 databus closed loop interface

### Technical specifications

---

#### General

Accessory group	ATS Master
Type	Module

#### Electrical

Operating voltage	10.5 - 13.8 V
Power supply type	VDC
Current consumption	80 mA max

#### Physical

Physical dimensions	175 x 50 mm (W x H)
---------------------	---------------------

#### Environmental

Operating temperature	0 to 50°C
Relative humidity	95 % noncondensing

#### Specified cable

	Aritech WCAT 52/54 or equivalent
--	----------------------------------

#### Max. distance from panel

	1.5 km
--	--------