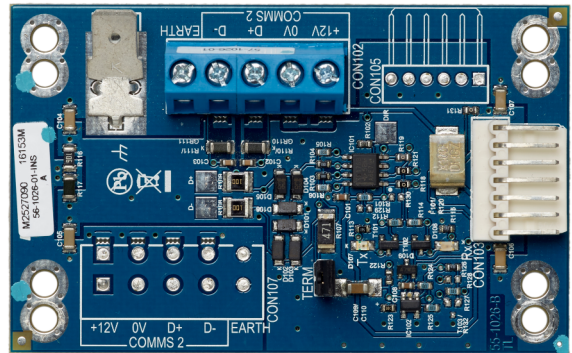


ATS670

Second RS485 LAN Extension Module for ATS4500A



ATS670

Second RS485 LAN Extension Module for ATS4500A

Technical specifications

General

Accessory group	Advisor Advanced
Type	Module

Electrical

Operating voltage	9.5 to 13.8 VDC
Current consumption	50 mA

Physical

Physical dimensions	80 x 50 mm
---------------------	------------

Environmental

Operating temperature	-10 to +55°C
-----------------------	--------------

Standards & regulation

Certification	EN50131 Grade 3, VdS
---------------	----------------------