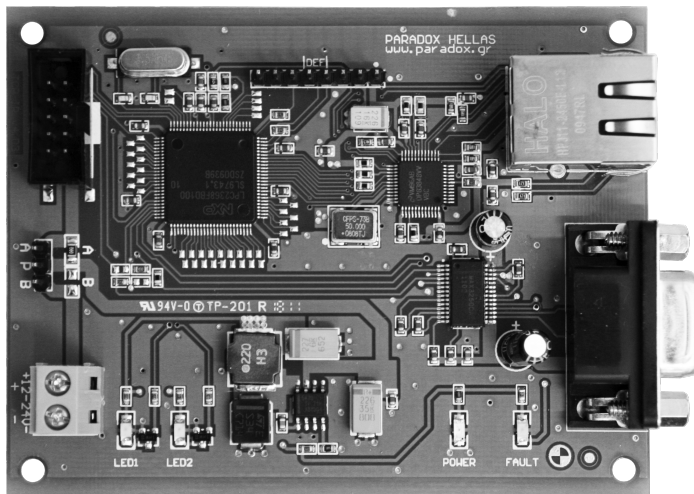


SRTCP-IP

Communication Module TCP/IP - RS232



SRTCP-IP module connects directly with SmartX panel's main board ("TO TCP/IP BOARD" connector). SRTCP-IP gives the ability to program and control the SmartX fire alarm panel through the ethernet / internet (TCP/IP) in real time with the use of the specially designed SmartView software.

It also provides local connectivity through the RS232 port for the SmartView Configuration Utility.

Programming of the SRTCP-IP module's communication parameters is performed through the SmartX panel's keypad.

Technical Characteristics

Power Supply	
10 pin box connector	5 VDC / 12-24 VDC
Terminal Connector	12-24VDC
Consumption	250mA MAX
Connections	Ethernet, Serial RS232
RS232	
Ground Isolation	50 V
Connector	Female D9
Ethernet	
Ground Isolation	Full galvanic isolation
Connector	RJ45
Ethernet type	10/100 Mbps
Indications	
Power	Device is powered
Fault	Ground isolation potential is more than 50 V
LED1	Remote client connected
General	
Operating Temperature	From 0°C to 50°C (From 14°F to 122 °F)
Humidity	95% max.
Dimensions	7.4 x 9.7cm



***Do not connect/disconnect
SRTCP/IP module if SmartX panel
is powered up***

PARADOX HELLAS S.A.
fire alarm & security systems

Korinthou 3, Metamorfofi 144 51, Athens-Greece
www.paradox.gr