

SALTO GEO Cylinder | the next generation of electronic cylinder lock

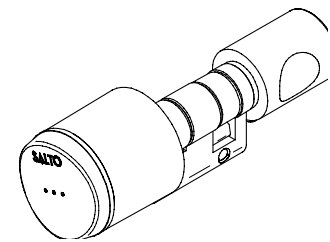
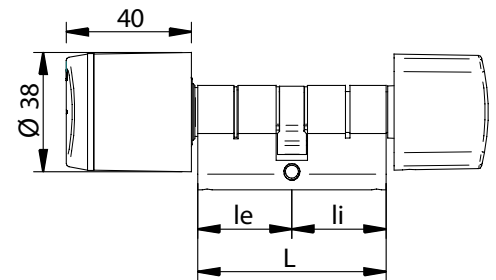
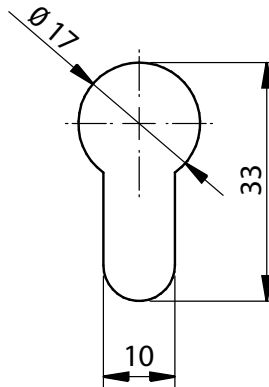
European cylinder - G9E2



Fully integrated with the SALTO XS4 platform, GEO is a versatile, cost effective solution and its compact size and easy installation makes it the ideal electronic locking system for almost any type of door.

SALTO GEO Electronic Cylinder Euro profile with inside thumb turn

The SALTO GEO cylinder European profile is specially designed to fit most Euro profile doors that are equipped with a European profile cylinder mortise lock. A wire free fully stand alone electronic access control solution, it is suitable for installation in almost every type of wooden door including antique or listed wooden doors, metal and metal framed doors and glass doors.



Main features and benefits

- Fully integrated with the SALTO XS4 platform.
- Virtual network capable through SALTO Virtual Network technology.
- Choice of ID carriers: iButton, Mifare, DESfire.
- NFC compatible on contactless versions.
- All communications between the carrier and the GEO cylinder are encrypted and secure.
- Optical signalling through light ring. Dual colour green/red to indicate access authorisation.
- Acoustic signalling optional.
- Available in 4 different finishes: satin chrome, polished chrome, PVD polished brass and PVD satin brass.
- Different thumbturn options.
- High security via high resistance, hardened anti-drill protection.
- Concealed fixing screws for greater security and improved aesthetics.
- Emergency opening by means of portable programming device (PPD).
- Available for distances from 40. up to 60mm.

Access control features:

- Maximum number of users per door: 4 millions.
- Maximum number of doors in a system: 64,000.
- Maximum events on lock audit: 1000.
- Time zones: 256. • Time periods: 256.
- Calendars in system: 256.
- Zones in system: 1024.
- User groups: unlimited.

Available lock modes:

- Standard (locked at all times).
- Automatic opening (8 pairs of "hands free" timed lock and unlocks per day with holidays).
- Toggle (present card to lock, present card to unlock).
- Time toggle (present card to lock, present card to unlock depending on schedules).

Technical data:

- **Current required:**
_1 Lithium standard battery CR2
- **Number of openings:**
_Up to 40,000 on 1 battery
- **Environmental conditions:**
- **Certifications:**
_Highest EN certification
IP degree 66*

* Consult SALTO for further details

SALTO Systems HQ - Polígono Lanbarren - C/ Arkotz,9 - 20180 Oiartzun Spain
Tel.: +34 943 344 550 -Fax: +34 943 341 621 - info@saltosystems.com · www.saltosystems.com

SALTO International

SALTO Systems HQ, Spain • SALTO Systems Inc., USA • SALTO Systems Ltd., UK • SALTO Asia-Pacific, Singapore • SALTO Australia
SALTO Canada • SALTO Denmark • SALTO Germany • SALTO Mexico • SALTO Middle East • SALTO Netherlands • SALTO Portugal • EVVASALTO Sweden