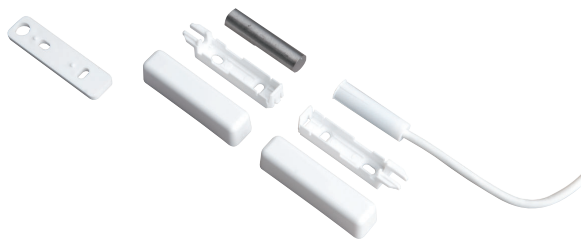


LSN Surface-Mount Magnetic Contact

www.boschsecurity.com



BOSCH
Invented for life



- ▶ LSN surface-mount magnetic contact for release monitoring of doors and windows
- ▶ Parallel mounting
- ▶ Installation in ferromagnetic materials is permissible by using the EG1 flush mounting housing
- ▶ For connecting to LSN security systems

The LSN surface-mount magnetic contact is used for release monitoring of doors and windows. Parallel mounting.

Certifications and approvals

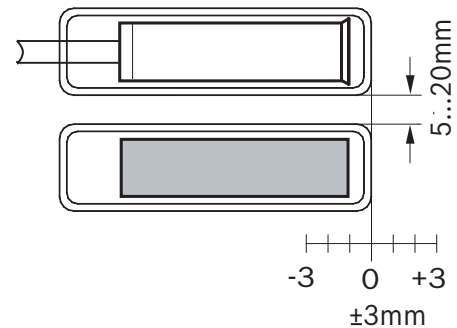
| Region | Certification | |
|---------|---------------|--|
| Germany | VdS | G111502 ISP-MCB2-FP110 |
| Europe | CE | ISP-MCB2-FP110, ISP-MCB3-FP110, ISP-MCS2-FP110, ISP-MCS3-FP110 |

Installation/configuration notes

Installation information

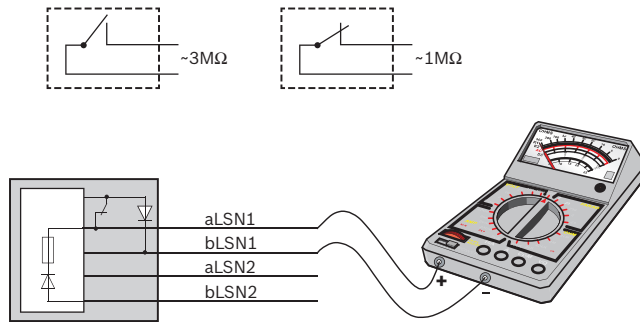
- The magnetic contact and magnet are installed parallel to each other on window or door frames and window or door jambs.
- The magnet should be fixed in a bore.
- Installation in ferromagnetic materials (metal flush mounting) is only permissible with the optional EG1 flush mounting housing.

Installation distance



Checking the switch function of the contact

- a) Use a high-ohm multimeter or continuity checker (for diode paths) to check the function of the LSN contact:
- contact open: approximately 3 megaohm
 - contact closed: approximately 1 megaohm
- The resistance values are approximate. A large change in resistance is significant.



Connecting LSN contacts

- Each LSN contact is a physical LSN element (1 out of 127 possible per loop).
- Include the length of LSN contact connection cables when planning the total line length of the LSN loop, as the LSN technology is integrated in these contacts.
- Position passive elements for connecting the connection cables to the installation cable as close as possible to the LSN contacts, as a 1m connection cable with 2m LSN cable length is included in the calculation of the LSN cable length (LSN is fed into the contacts and back out again).
- Connector boxes (optional) are classified as installation material.

Parts included

| Qty. | Components |
|------|----------------------|
| 1 | 4 m connection cable |
| 1 | Magnet |
| 1 | Enclosure |
| 1 | Installation note |

Technical specifications

Electrical

| | |
|-----------------------------------|-------------|
| Minimum operating voltage in VDC | 15 |
| Maximum operating voltage in VDC | 33 |
| Maximum current consumption in mA | 0.25 |
| Reed contact | NO |
| Switch tolerance | $\geq 10^7$ |

Mechanical

| | |
|--------------------------------------|-------------------|
| Dimension in cm (H x W x D) | 1.2 x 1.18 x 4.28 |
| Dimension in cm (\varnothing x D) | 0.8 x 3.0 |
| Material | AlNiCo 500 |
| Housing material | ABS |

| | |
|------------------|--|
| Color | white |
| Connection cable | LiY(St)Y 4 x 0,22 mm ² with shield, exterior \varnothing 3,2 mm, length 4 m |

Environmental

| | |
|-------------------------------------|-------|
| Minimum operating temperature in °C | -25 |
| Maximum operating temperature in °C | 70 |
| Protection class | IP 68 |
| Environmental class | III |

Ordering information

LSN Surface-Mount Magnetic Contact

For monitoring the opening of doors and windows, parallel mounting
Order number **ISP-MCS2-FP110**

Represented by:

Americas:

Bosch Security Systems, Inc.
130 Perinton Parkway
Fairport, New York, 14450, USA
Phone: +1 800 289 0096
Fax: +1 585 223 9180
security.sales@us.bosch.com
www.boschsecurity.us

Europe, Middle East, Africa:

Bosch Security Systems B.V.
P.O. Box 80002
5617 BA Eindhoven, The Netherlands
Phone: + 31 40 2577 284
Fax: +31 40 2577 330
emea.securitysystems@bosch.com
www.boschsecurity.com

Asia-Pacific:

Robert Bosch (SEA) Pte Ltd, Security
Systems
11 Bishan Street 21
Singapore 573943
Phone: +65 6571 2808
Fax: +65 6571 2699
apr.securitysystems@bosch.com
www.boschsecurity.asia

China:

Bosch (Shanghai) Security Systems Ltd.
203 Building, No. 333 Fuquan Road
North IBP
Changning District, Shanghai
200335 China
Phone +86 21 22181111
Fax: +86 21 22182398
www.boschsecurity.com.cn

America Latina:

Robert Bosch Ltda Security Systems Division
Via Anhanguera, Km 98
CEP 13065-900
Campinas, Sao Paulo, Brazil
Phone: +55 19 2103 2860
Fax: +55 19 2103 2862
latam.boschsecurity@bosch.com
www.boschsecurity.com