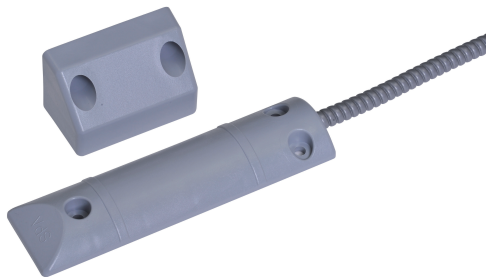


# ISP-RSC2-110S LSN shutter door contact

www.boschsecurity.com



**BOSCH**  
Invented for life



- ▶ LSN shutter door contact for monitoring shutter, sliding, and garage doors
- ▶ High level of mechanical strength
- ▶ Parallel mounting
- ▶ For connecting to LSN intrusion control panels
- ▶ VdS class B, EN 50131-2-6 Grade 2

The LSN shutter door contact is used to monitor shutter, sliding, and garage doors. The shutter door contact consists of a sealed magnetic switch and a magnet in a plastic housing. The components are surface-mounted parallel to each other. The magnetic switch is mounted on the floor.

- Only anti-magnetic screws may be used for installation.
- The magnetic switch must not be used as a door stopper.

## Certifications and approvals

Region	Certification	
Germany	VdS	G113513
Europe	CE	ISP-RSC2-110S
	EN50131	ISP-RSC2-110S

## Installation/configuration notes

### Installation information

- For doors < 1.5 m, one shutter door contact is required. For doors > 1.5 m, use two shutter door contacts. Take note of the permissible installation tolerances.
- The connection cable is protected over a length of 1 m by flexible metal conduit.
- The magnetic switch is installed at ground level (requires a flat surface). The switch will not be damaged if driven over by vehicles with rubber tires.

### Connecting LSN contacts

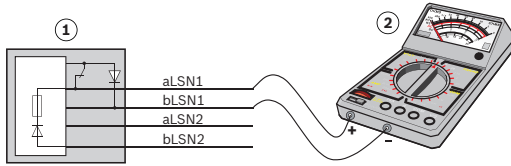
- Each LSN contact is a physical LSN element (1 out of 127 possible per loop).
- The length of LSN contact connection cables must be included when planning the total line length of the LSN loop, as the LSN technology is integrated in these contacts.
- Passive elements for connecting the connection cables to the installation cable must be positioned as close as possible to the LSN contacts, as a 1-m connection cable with 2-m LSN cable length is included in the calculation of the LSN cable length (LSN is fed into the contacts and back out again).
- Connector boxes (optional) are classified as installation material.

### LSN (Local Security Network)

In the event of wire breakage or short-circuits, all LSN elements in the LSN loop continue to be monitored. In this case, the system automatically creates two stub lines that continue to monitor from both sides up to the location of the fault.

### Testing LSN contacts

- Reed switch and microswitch functions can be checked before installation using a high-Ohm multimeter or continuity checker (for diode paths).
- The resistance values are approximate values; a large change in resistance is significant.



- |   |   |
|---|---|
| 1 | Contact us  |
| 2 | High-ohm multimeter<br>- Contact open: approx. 3 MOhm<br>- Contact closed: approx. 1 MOhm |

### Parts included

Type	Qty.	Components
ISP-RSC2-110S	1	Shutter door contact with 4-m connection cable and magnet incl. installation materials and metal tube

### Technical specifications

LSN operating voltage	15 V to 33 V
Reed contact type	Normally open contact
Switch tolerance	$\geq 10^7$
Installation distance	$\geq 20$ mm
Magnetic material	AlNiCo 500
Temperature range	-25 °C to +70 °C
Connection cable	LiY(St)Y 4 x 0.22 mm <sup>2</sup> , white
Cable length	4 m
Cable protection tube	Flexible metal tube, diameter: 6/9 mm, covered in plastic, length: 1 m, color: gray
Housing material/color	Plastic/gray
Weight (with cable and magnet)	Approx. 285 g
Switch dimension	150 x 40 x 13.5 mm
Magnet dimension	65 x 42 x 35 mm
Protection category	IP67
Environmental class VdS/EN	III/IIIA

### Ordering information

#### ISP-RSC2-110S LSN shutter door contact

For monitoring shutter, sliding, and garage doors, parallel surface mounting

Order number **ISP-RSC2S-110S**

**Represented by:**

**Americas:**

Bosch Security Systems, Inc.  
130 Perinton Parkway  
Fairport, New York, 14450, USA  
Phone: +1 800 289 0096  
Fax: +1 585 223 9180  
security.sales@us.bosch.com  
www.boschsecurity.us

**Europe, Middle East, Africa:**

Bosch Security Systems B.V.  
P.O. Box 80002  
5617 BA Eindhoven, The Netherlands  
Phone: + 31 40 2577 284  
Fax: +31 40 2577 330  
emea.securitysystems@bosch.com  
www.boschsecurity.com

**Asia-Pacific:**

Robert Bosch (SEA) Pte Ltd, Security  
Systems  
11 Bishan Street 21  
Singapore 573943  
Phone: +65 6571 2808  
Fax: +65 6571 2699  
apr.securitysystems@bosch.com  
www.boschsecurity.asia

**China:**

Bosch (Shanghai) Security Systems Ltd.  
201 Building, No. 333 Fuquan Road  
North IBP  
Changning District, Shanghai  
200335 China  
Phone +86 21 22181111  
Fax: +86 21 22182398  
www.boschsecurity.com.cn

**America Latina:**

Robert Bosch Ltda Security Systems Division  
Via Anhanguera, Km 98  
CEP 13065-900  
Campinas, Sao Paulo, Brazil  
Phone: +55 19 2103 2860  
Fax: +55 19 2103 2862  
latam.boschsecurity@bosch.com  
www.boschsecurity.com