



# When you want to **protect** what's important

## Product highlights

Designed for smaller, single-location installations

Supports up to **48 cameras**

Choose from **more than 6,000 cameras** from more than 100 manufacturers

**Single-layer, interactive map** provides a complete overview of the entire system with camera locations

Hide areas in the camera view that must not be visible or recorded with **privacy masks**

Record only when something happens with built-in **video motion detection**

Add extra functionality for a complete solution

Supports **third-party integrations and Milestone add-on products**

Combine with **XProtect Transact** to create a retail solution where video recordings help grow your bottom line

Use **XProtect Access** to integrate video with your access control system to easily verify visitor details

Browse the **Milestone Solution Finder** to find third-party solutions such as video analytics, facial recognition and perimeter protection

Access anytime, anywhere

**Three free clients** provides access on-site, off-site and on the go

**XProtect Smart Client** is a powerful interface for daily operations with sophisticated tools for finding and exporting evidence material

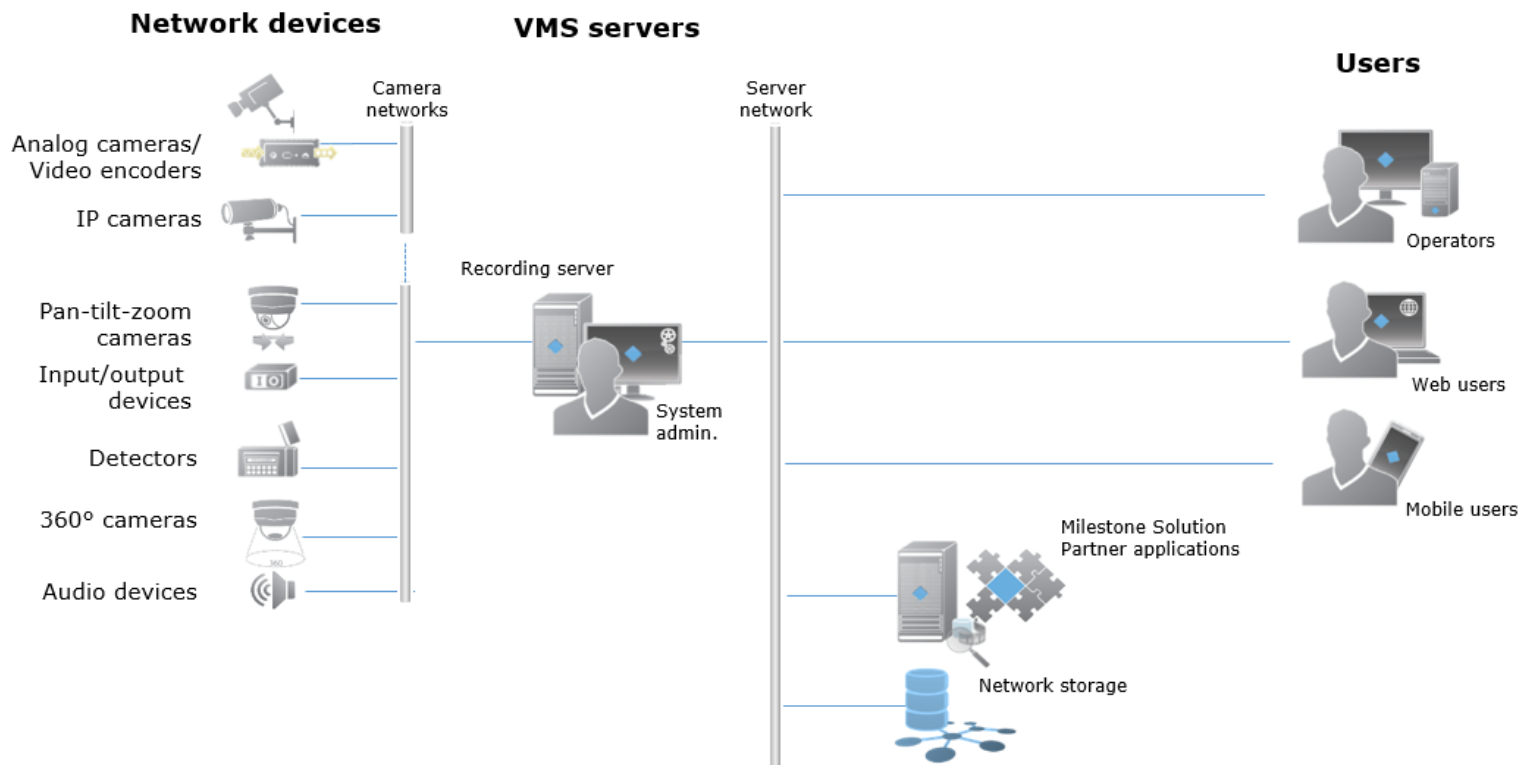
**XProtect Mobile** gives ultimate peace of mind with access to the system from anywhere

With **push notifications** sent directly to your mobile, you always know when something needs your attention

**XProtect Web Client** enables you to connect anywhere through browsers

| SKU     | Description                         |
|---------|-------------------------------------|
| XPEXBL  | XProtect Express base license       |
| XPEXCL  | XProtect Express device license     |
| YXPEXCL | 1-year Care Plus for device license |

## System diagram



### MANAGEMENT APPLICATION

A single management interface provides a single point of access to the Recording Server, Mobile server and Event server. System configuration wizards help add cameras, configure video and recording, adjust motion detection and configure multiple users.

### EVENT SERVER

Provides a single-layer map giving operators interactive access and control of the complete surveillance system. It hosts features for the alarm function and any third-party solution plug-ins.

### MOBILE SERVER

Runs as a dedicated service so it can be installed with an existing installation.

## Specifications

| General                             | Detail              |
|-------------------------------------|---------------------|
| Type of deployment                  | Single site         |
| Licensing                           | Perpetual           |
| Maximum number of cameras           | 48                  |
| Maximum number of recording servers | 1                   |
| Maximum number of concurrent users  | 5                   |
| Customer Dashboard                  | Yes, with Care Plus |
| Multiple video export formats       | Yes                 |
| Supports all XProtect clients       | Yes                 |
| Alarm Manager                       | Yes                 |
| Map function                        | Yes                 |
| Push notification                   | Yes, with Care Plus |
| Smart Start setup wizards           | Yes                 |

| Scalability                             | Detail      |
|---|-------------|
| Milestone Interconnect                  | Remote site |
| Supports third-party system integration | Yes         |
| Supports XProtect add-on products       | Yes         |

| Cybersecurity                      | Detail |
|------------------------------------|--------|
| Secure HTTPS camera connectivity   | Yes    |
| Digital signature on video exports | Yes    |
| Disablement of re-exporting        | Yes    |
| Dual authorization                 | Yes    |